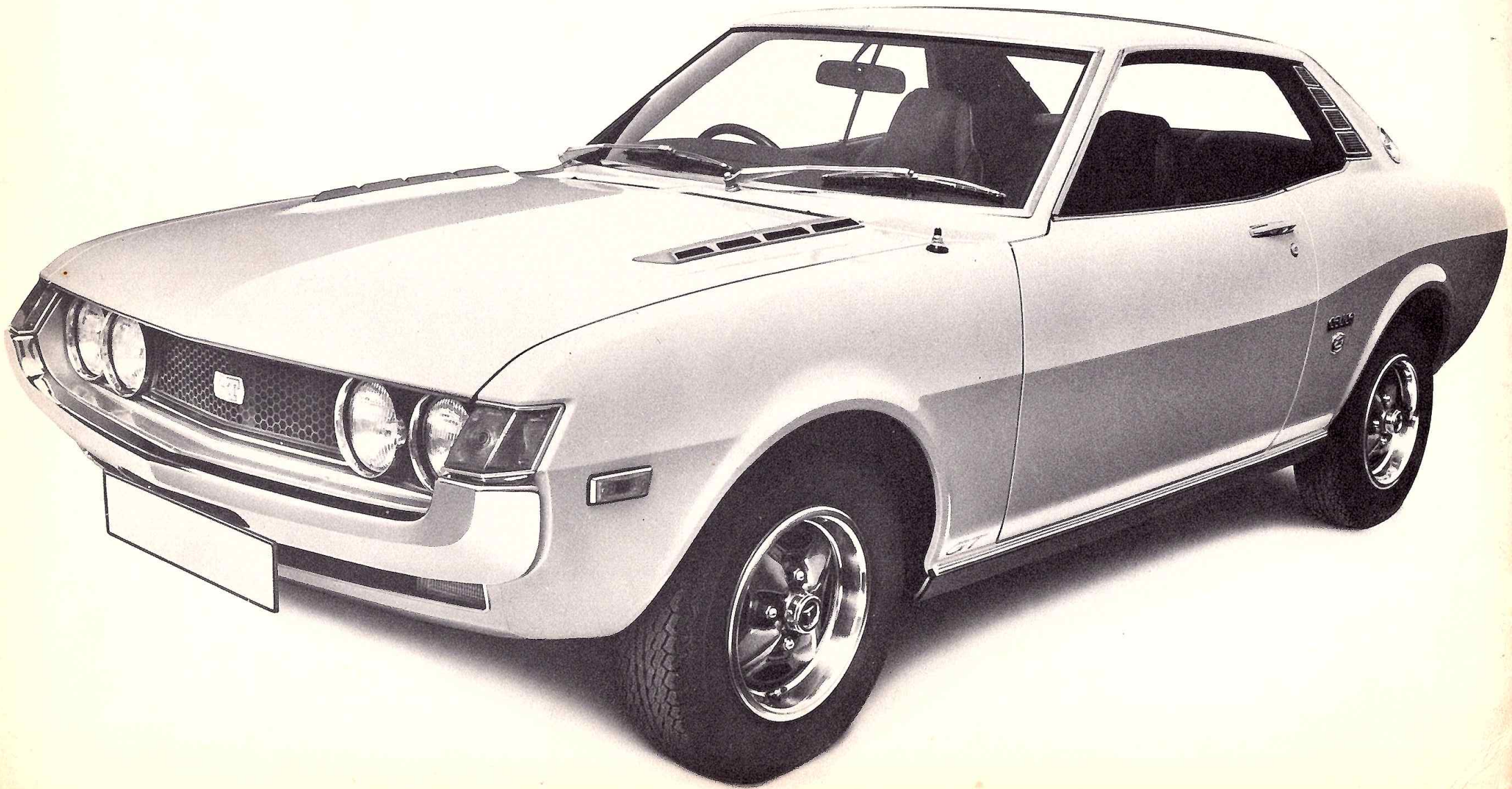
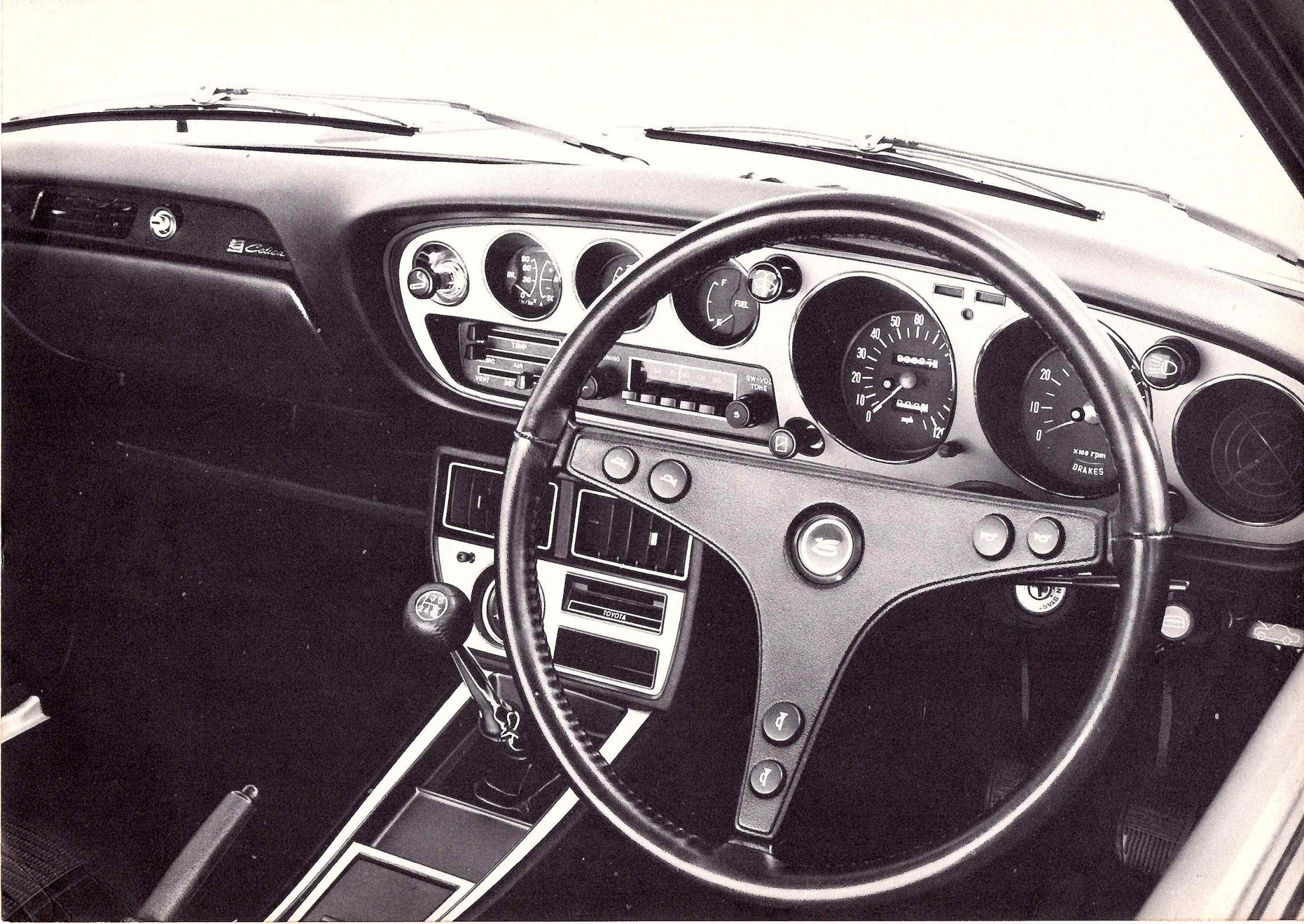


# The Toyota Celica GT Twin-cam.





## The weekend racer for weekday driving.

Once in a while a car comes along that has everything you've been looking for. Style. Power. Technical precision. Refinement.

The Celica GT is such a car. Its looks are racy, yet refined. It has a masculine edge about its styling that is sure to turn every female eye.

Beneath the bonnet there's real twin-cam urge from the precision 124 bhp (SAE) power house: 1588 ccs, two twin-choke carbs, up to 115mph.

A limited slip differential lays the power firmly on the road—you don't want to leave a trail of smouldering rubber every time you open the throttle wide.

The Celica GT is the sort of car you can't wait to get out on the open road.

But what's it like in traffic?

Don't worry. The Toyota twin-cam engine is just as much tuned to town driving as it is to the race track.

Even your girlfriend could handle it about town without getting the plugs fouled up. That is, if you dare let her near it.

The Toyota GT doesn't waste time letting you know it's a race-bred machine.

There's a real leather-bound sportswheel and gear-change knob. The fascia has a matt



aluminium finish with black non-reflecting dials—and there's a five-speed gearbox to play tunes on.

The seats are fully contoured and luxuriously upholstered. They have integral headrests—not just for looks—but as a point of safety, if you value your neck. They also recline.

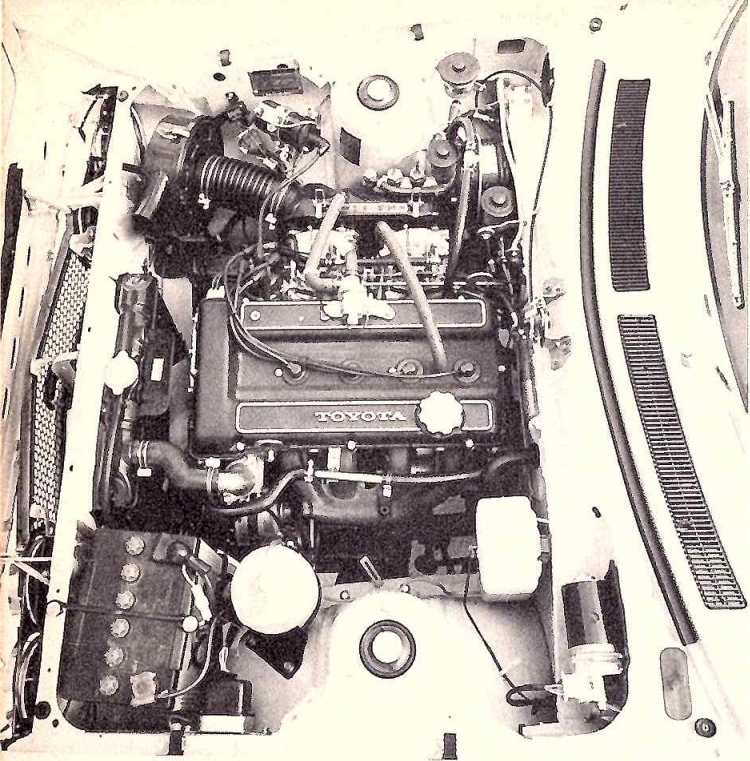
Glass is tinted all round to cut down glare. When you're travelling at the Celica GT's pace, it's vital to see clearly at all times.

There's full sports instrumentation so you know exactly what's going on. A push-button radio is standard, with an electro-magnetic aerial release.

The roof section is reinforced—a strong safety feature. Wide radial tyres sit on 5J pressed-steel race-style wheels—sculptured in chrome and embossed with enamel.

Other standard equipment includes: clock on central console, flow-through ventilation, heated rear window, cigar lighter, four headlights, hazard warning lights, locking fuel cap.





## Specification. Toyota Celica GT Twin-cam.

### Engine

Model:	Water cooled, 4-cylinder in-line, DOHC 5-main bearing crankshaft. Cross-flow intake/exhaust manifold system. Hemispherical combustion chambers.
Bore & Stroke:	85 mm/70 mm
Cubic Capacity:	1588 cc
Compression Ratio:	9.8:1
Max. Horsepower (SAE):	124 @ 6400 rpm
Max. Torque (SAE):	113 ft/lbs @ 5200 rpm
Carburettor:	Twin Solex with manual choke and an idling limiter
Battery:	12 volt, 35 amp/hr
Alternator:	12 volt, 480 watts, 40 amp/hr
Fuel Capacity:	11 gallons

### Transmission

Box:	5 speed. All forward gears synchromesh manual, floor shift.
Ratios:	1st-3.587; 2nd-2.002; 3rd-1.384; 4th-1.000; 5th-0.861; reverse-3.484.

### Rear Axle

Type:	Limited slip differential
Final Drive Ratio:	4.100:1

### Steering

Type:	Recirculating ball
Gear Ratio:	18.1:1

### Brakes

Type:	Hydraulic. Front disc, rear drum - servo assisted. Parking brake operates mechanically on rear wheels.
Diameter:	9 ins. front/9 ins. rear

### Suspension, Body and Tyres

Front Suspension:	Independent with coil springs, torsion bar stabiliser, long-stroke telescopic shock absorbers, anti-sway bars and lower wishbones.
Rear Suspension:	4 link type with two upper and two lower longitudinal links, coil springs, long stroke telescopic shock absorbers and a lateral track bar.
Body:	All welded steel with unit construction and impact absorbing sections front and rear.
Tyres:	165 HR-13 radial tyres.
Wheels:	Pressed steel disc wheels - 5J.

### Dimensions & weights

Wheel base:	7 ft 11.5 ins.
Track front:	4 ft 2.4 ins.
Overall length:	13 ft 7.9 ins.
Overall width:	5 ft 3 ins.
Overall height:	4 ft 3.6 ins.
Ground clearance:	6.9 ins.

Kerb weight:	2215 lbs.
Minimum turn circle:	31 ft 6 ins.

### Equipment:

Tinted glass all round · Metallic paintwork (no cost option) · Carpets · Reclining front seats with head restraints. Push button AM radio · Electro-magnetic aerial release · Clock · Two-speed wipers · Electric windscreen washers · Three-speed heater/demister · Flow-through ventilation · Heated rear window · Cigar lighter · Lockable glove compartment · Matt aluminium fascia and leather bound sportswheel · Tachometer · Centre console · Night mirror · Steering lock · Alternator · Hazard warning lights · Reversing lights · Headlamp flasher · Lockable petrol cap · Door safety lights · Comprehensive tool kit · Inspection lamp · Radial tyres · Wide sculptured road wheels.

Seat belts and number plates not included as standard equipment. Toyota reserves the right to alter prices and any details of specification and equipment without notice.

TOYOTA (G.B.) LIMITED, 320 PURLEY WAY, CROYDON, SURREY CR0 4XJ. Tel: 01-681 1921.

## TOYOTA.



The only trouble you'll have is choosing.

